

EXTENDING

established in 1979, specialized in telecom., datacom. and networking cable assemblies & accessories. We have qualified ISO 9001:2008 approval since 2005, UL & CUL. approval since 1992, been engaged in quality advancement and product upgrade for customer's satisfaction & trust thoroughly.



Having a good reputation on worldwide market accumulated for over 25 years. For enhancing our competition, in 1998 we also set up a factory with over 500 employees in China including manufacturing, Q.C. Products engineering R & D, administration and marketing sales Dept. We keep on creating, developing new products and devote R & D to match market's demands.

- OEM/ODM are welcome.
- **Small profit and quick response**
- Quality products.
- **Competitive costs.**
- Timely communication.
- **On time delivery.**
- Packaging compliance.

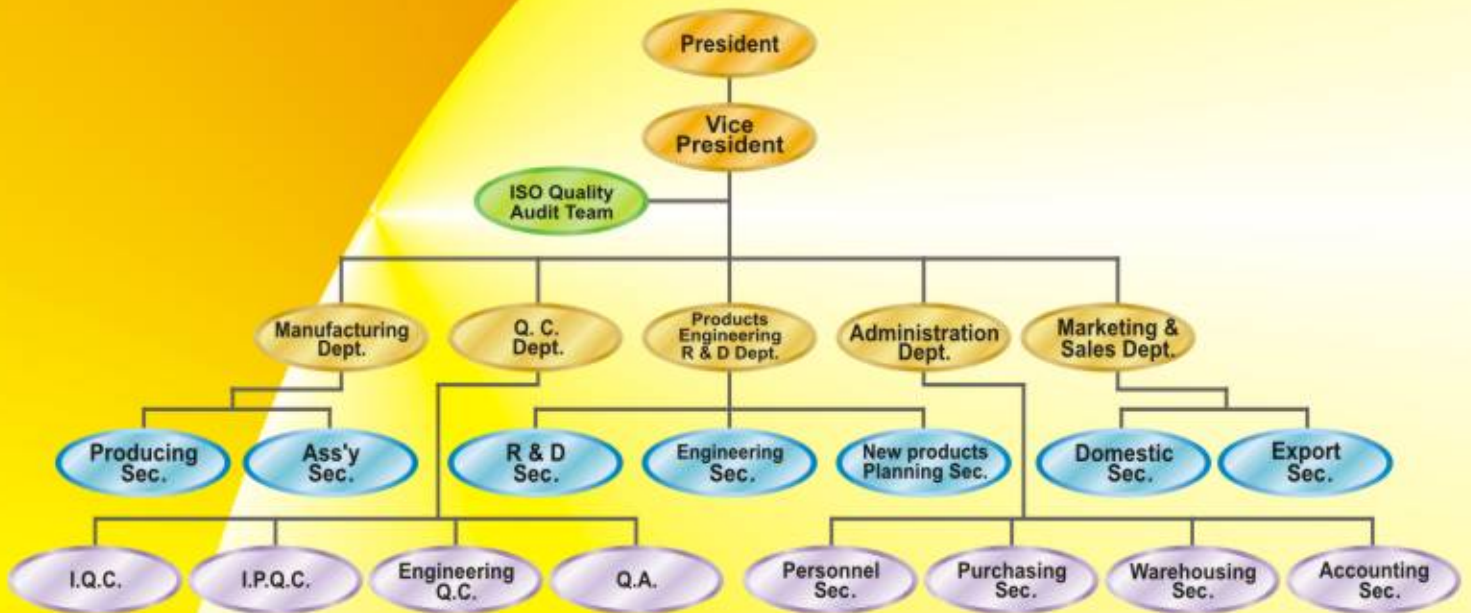


INDEX

COMPANY PROFILE.....	1
ORGANIZATION CHART.....	2
QC FLOWCHART.....	3
USB Super Speed (3.0) CABLE & ADAPTOR.....	4
USB LIGHTED CABLE ASSEMBLIES.....	5
USB High Speed CABLE ASSEMBLIES.....	8
USB ADAPTOR.....	10
Display Port CABLE ASSEMBLIES.....	11
HDMI CABLE ASSEMBLIES.....	12
DVI CABLE ASSEMBLIES.....	13
Display Port , HDMI , DVI ADAPTOR.....	14
IEEE 1394a CABLE ASSEMBLIES.....	15
IEEE 1394b CABLE ASSEMBLIES.....	16
SATA CABLE ASSEMBLIES.....	17
WATER-PROOF CABLE & CONNECTOR.....	18
LAN CABLE & ACCESSORIES.....	19
KVM CABLE & ASSEMBLIES.....	22
COMPUTER CABLE & ADAPTOR.....	24
COMPUTER CABLE ASSEMBLIES.....	25
AUDIO/VIDEO CABLE & ADAPTOR.....	26
OEM & ODM PRODUCTS.....	28
TELEPHONE CABLE.....	30
TELEPHONE ACCESSORIES.....	32
MODULAR PLUG.....	36

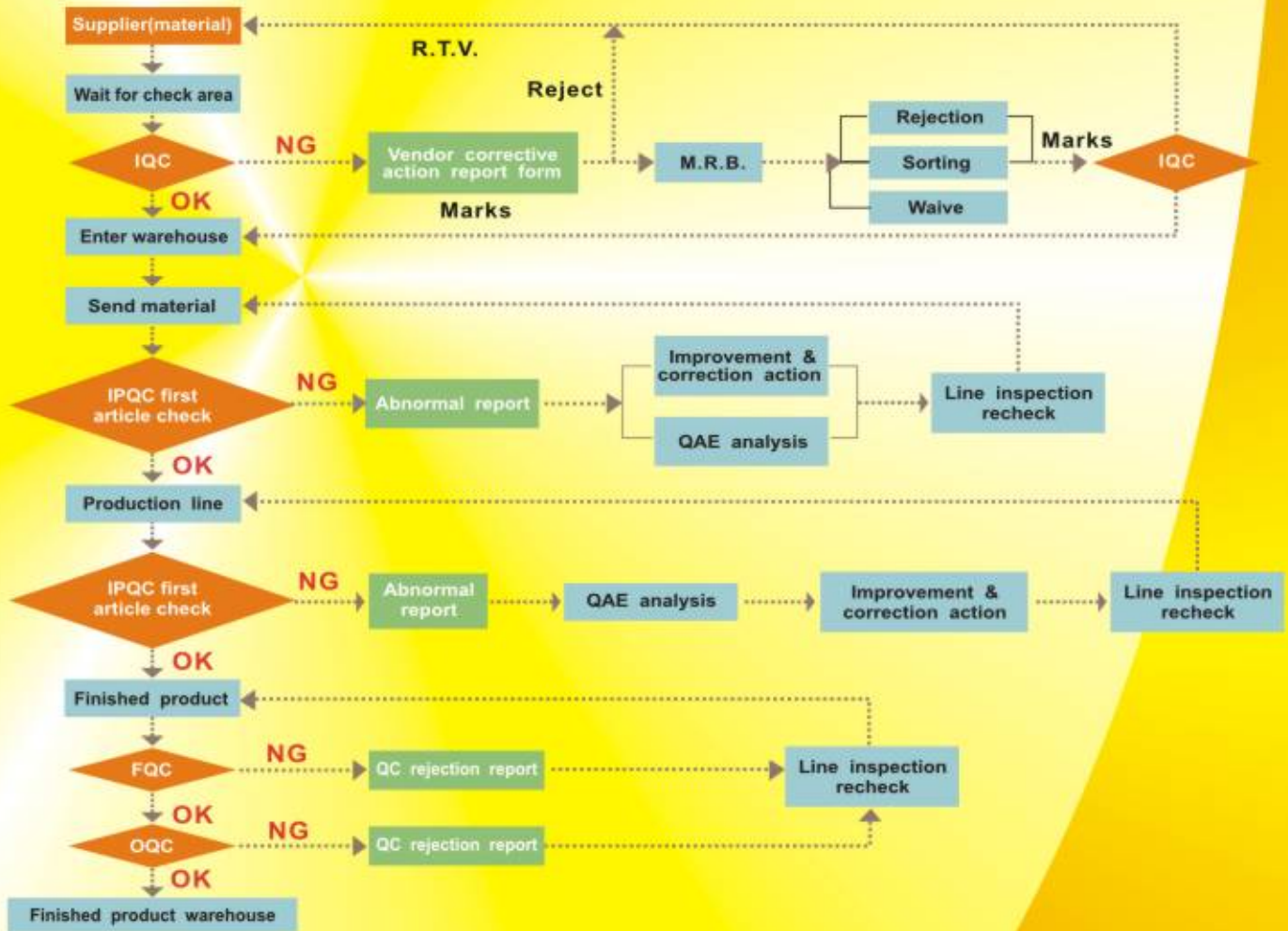


ORGANIZATION CHART





QC FLOWCHART



Satisfying customer's demands is our top promise, while "good quality control " plays the most important role in achieving this . There is complete vertical integration from stamping of the contacts all the way to final cable assemblies & packing. A rigorous final inspection process is conducted before packaging your products for delivery.



USB SUPER SPEED (3.0) CABLE & ADAPTOR



USB 3.0 CABLE
A/M TO Micro B/M



USB 3.0 CABLE
A/M TO B/M



USB 3.0 CABLE
A/M TO A/M



USB 3.0 ADAPTOR
A/F TO A/F



USB 3.0 ADAPTOR
A/M TO A/F



USB 3.0 ADAPTOR
A/M TO B/M



USB 3.0 ADAPTOR
A/M TO Micro B/M



USB 3.0 PCB ADAPTOR
A/F TO A/F



USB 3.0 PCB ADAPTOR
B/F TO Micro B/F



USB 3.0 PCB ADAPTOR
A/M TO B/F



USB 3.0 PCB ADAPTOR
A/F TO B/F



USB 3.0 PCB ADAPTOR
B/F TO B/F



USB 3.0 PCB ADAPTOR
A/M TO Micro B/F



USB 3.0 PCB ADAPTOR
A/M TO A/F



USB 3.0 PCB ADAPTOR
A/F TO Micro B/F



USB 3.0 PCB ADAPTOR
Micro B/F TO Micro B/F

USB **LIGHTED** CABLE ASSEMBLIES



patent no:

203 14 377.9



EXTENDING WIRE & CABLE CO., LTD.



USB LIGHTED CABLE ASSEMBLIES MINI USB LIGHTED CABLE ASSEMBLIES

Features

- Comes in red , blue , green , or clear LED
- Installs and works with the ease and speed of USB
- Meets the speed requirements of USB 2.0
- Creates a cool light effect on your desktop when used with a UBS Hub
- Helps you locate cables fast , in poorly lit areas of behind your CPU
- Connects all your peripheral devices with a USB standard B plug to your computer or USB Hub
- Reduces EMI / RFI interference with braid-and-foil shield construction
- Cable : 28AWG*1PR (Signal) + 24AWG(28AWG) *2C(Power)+Drain wire
Aluminum Foil & Braid ,Jacket Color in Transparent.

Construction:



Fully Rate Type

Application

Computer , printers , modem , keyboard , mice , scanners , joystick , pens , cd-rom drivers , & multi - media devices . It also can up to 127 devices in DAISY CHAIN.

HOW TO ORDER

500
501 --- XX XX XX X

500	USB 2.0 Hi-Speed Lighted Cable Assemblies
501	Mini USB Lighted Cable Assemblies

PACKAGE	
1	1PC / Polybag
2	Blister (Shell Type)

LED Lighting	
RD	Red Color
BL	Blue Color
CL	Clear Color
GN	Green Color

CONNECTOR TYPE			
11	A/Male - A/Male	17	A/Male - Mini USB B 5P
12	A/Male - B/Male	27	B/Male - Mini USB B 5P
13	A/Male - A/Female	37	A/Female - Mini USB B 5P
22	B/Male - B/Male	66	Mini USB A 5P - Mini USB A 5P
23	B/Male - A/Female	77	Mini USB B 5P - Mini USB B 5P
33	A/Female - A/Female		

CABLE LENGTH	
03	3 Feet
06	6 Feet
10	10 Feet

For Example :

500-1706BL1 USB 2.0 Hi-Speed Lighted Cable Assemblies
A/Male to Mini USB B 5P Connector 6 Feet Length , Blue Color , 1PC / Polybag .

501- 6606GN2 Mini USB Lighted Cable Assemblies
Mini USB A 5P Connector to Mini USB A 5P Connector 6 Feet Length , Green color , Blister - Shell Type .



USB LIGHTED CABLE ASSEMBLIES



A/M TO A/M



A/M TO B/M



A/M TO A/F



B/M TO B/M



B/M TO A/F



A/F TO A/F



A/M TO Mini USB B 5P



B/M TO Mini USB B 5P



A/F TO Mini USB B 5P



Mini USB A 5P TO Mini USB A 5P



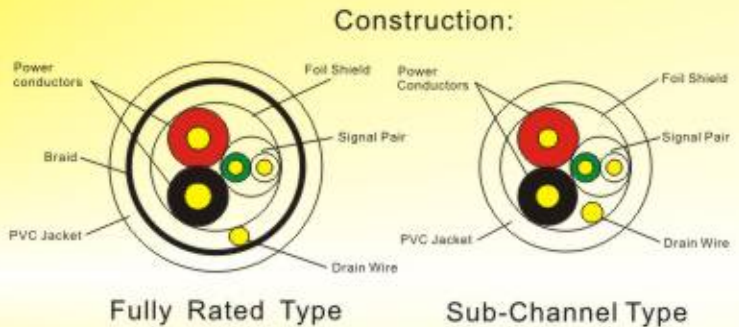
Mini USB B 5P TO Mini USB B 5P

PATENT NO . 203 14 377.9



USB CABLE ASSEMBLIES MINI USB CABLE ASSEMBLIES

This Data Sheet describes a Universal Serial Bus cable construction consisting of one 28 AWG twisted signal pair and two 20-28 AWG power conductors under a foil shield, with a 28 AWG drain and a braid shield, with an overall Frost PVC jacket.



USB 2.0 Cable Applications

Computer, printers, modem, keyboard, mice, scanners, joystick, pens, cd-rom drivers, & multi-media devices. It also can up to 127 devices in DAISY CHAIN.

Construction	Fully Rated	Sub-Channel
Signal pair (Twisted pair) (Green & White color wire)	1 pair (#28AWG) PE or PP	1 pair (#28AWG) PE or PP
Power conductors (Red & Black color wire)	2C (#28,#26,#24,#22,#20AWG) SR-PVC	2C (#28,#26,#24,#22,#20AWG) SR-PVC
Shielding	Al foil+#28 drain wire + 65%braiding	Non
Jacket	PVC	PVC

Mini USB Cable Assemblies

Application: Notebooks , Cell phone , MP3 players , Digital cameras , PDA , Portable devices.

HOW TO ORDER

502
503 --- XX X XX XX XX

502	USB 2.0 Hi-Speed Cable Assemblies
503	Mini USB Cable Assemblies

CABLE CONSTRUCTION	
28	#28AWG/1PR + #28AWG/2C
26	#28AWG/1PR + #26AWG/2C
24	#28AWG/1PR + #24AWG/2C
22	#28AWG/1PR + #22AWG/2C
20	#28AWG/1PR + #20AWG/2C

SHIELD TYPE	
F	Fully Rated
S	Sub - Channel

CONNECTOR TYPE	
12	A/Male - B/Male
13	A/Male - A/Female
14	A/Male - B/Female
15	A/Male - 5P Housing
23	B/Male - A/Female
16	A/Male - Mini USB A/Male 5P

CONNECTOR TYPE	
17	A/Male - Mini USB B/Male 5P
18	A/Male - Mini USB A 4P(Mistumi)
19	A/Male - Mini USB B 4P(Mistumi)
10	A/Male - Mini USB 4P(Hirose)
28	B/Male - Mini USB A 4P(Mistumi)

CABLE COLOR	
BG	Beige Color
GY	Gray Color
BK	Black Color
RD	Red Color
BL	Blue Color
TP	Transparent
XX	---

CABLE LENGTH	
03	3 Feet
06	6 Feet
10	10 Feet

For Example : 502- 24F1206BG

USB 2.0 Hi-Speed Cable Assemblies
28AWG / 1PR+24AWG/2C , Fully Rated Type Cable , A/Male to B/Male Connector , 6 Feet Length , Beige Color .

503- 28F1606BK

Mini USB Cable Assemblies
28AWG/1PR+28AWG/2C , Fully Rated Type Cable , A/Male to Mini USB A/Male 5P Connector , 6 Feet Length , Black Color .



USB CABLE ASSEMBLIES MINI USB CABLE ASSEMBLIES



A/M TO B/M



A/M TO A/F



A/M TO A/F



A/M TO B/F



A/M TO MICRO 5P B



B/M TO A/F



A/M TO Mini USB A 5P



A/M TO Mini USB B 5P



A/M TO Mini USB A 4P(Mistumi)



A/M TO Mini USB B 4P(Mistumi)



B/M TO Mini USB A 4P(Mistumi)



A/M TO Mini USB A 4P(Hirose)



USB ADAPTOR



504-30
Micro B/M TO Micro B/F



504-31
USB A/M TO Micro B/M



504-33
USB A/F TO Micro B/M



504-12
USB A/M TO USB B/M



504-14
USB A/M TO USB B/F



504-34
USB A/F TO USB B/F



504-32
USB A/F TO USB B/M



504-17
USB A/M TO Mini USB B 5P



504-18
USB A/M TO Mini USB 4P(Mistumi)



504-10
USB A/M TO Mini USB 4P(Hirose)



504-1DC
USB A/M TO ϕ 3.5 DC PLUG



504-3MD
USB A/F TO Mini Din 6P



DISPLAY PORT CABLE ASSEMBLIES

Display port cable specification:

- Support hot swapping
- Electrical feature: +3.3V
- Max. Voltage: 16.0V
- Max. Current: 500 mA
- Audio signal: Optional. 1-8 channels, 16 or 24-bit linear
- PCM; 32 to 192kHz sampling rate; maximum bit rate 6.144 Mbit/s
- Data signal: 1.62, 2.7 or 5.4 Ghz symbol rate
- Cable: Maximum length 15 meters for video transmission



Display port To HDMI



Mini Display port To VGA



Mini Display Port To DVI



Display port To Display port



Display port To DVI



HDMI CABLE ASSEMBLIES



Projector



Full HD Television



AV Amplifier



PS3



PC



BD



Camcorder



Mini HDMI TO Mini HDMI



HDMI TO Mini HDMI



HDMI TO DVI



HDMI A/M 19P TO HDMI A/M 19P



HDMI A/M 19P TO DVI 18+1/M



HDMI A/M 19P TO DVI 24+5/M



DVI CABLE ASSEMBLIES

Applications

- LFH™ (Low Force Helix) rugged contacts offer increased life cycle durability, mechanical and electrical reliability.
- Detent feature provides grounding and secure mating retention.
- DVI cable support Digital and high bandwidth Analog connectivity between the Host device and Display device, Including;CRTS, DFP (Digital Flat Panel) Displays, Projectors and TV.

Specifications

- Transmits data at speeds up to 1.65 Gbps per differential pair.
- Full shield provides EMI/RFI protection.
- Jackscrew provides positive lock to mating connector with thread 4-40 UNC-2A.



DVI 0201-06

DVI 0201-06
DVI Digital Dual Link Cable
DVI 24+1M/M, L:6FT



DVI 0801-06
DVI Analog /Digital Cable
DVI 18+5M/M, L:6FT



DVI 0301-06
DVI Analog Cable
DVI 12+5M/M, L:6FT



DVI 0901-06
DVI Digital / captive Cable
DVI 18+1M/2x9 Housing, L:6FT



DVI 0101-06
DVI Digital Single Link Cable
DVI 18+1M/M, L:6FT



DVI 0401-06
DVI Analog / VGA Cable
DVI 12+5M-TO HDB 15M,L:6FT



DVI 0701-06
DVI Digital / DFP Cable
DVI 18+1M/HPCNZOM, L:6FT



DISPLAY PORT , HDMI , DVI ADAPTOR



Display port M TO Display port F



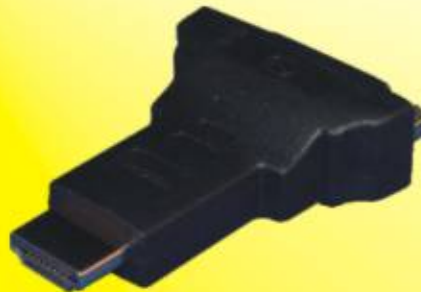
Displayport M TO DVI F(18+1)



Mini HDMI M TO HDMI F



HDMI F TO HDMI F



HDMI M TO DVI F(24+1)



HDMI F TO DVI M(24+1)



HDMI F TO DVI M(18+1)



HDMI M TO DVI F(18+1)



HDMI F TO DVI M(18+1)



DVI M(18+1) TO HDMI F



DVI M(24+1) TO HDB15 F



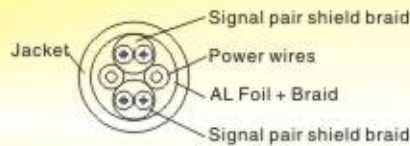
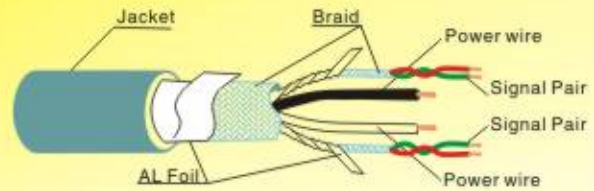
DVI M(18+5) TO HDMI F



IEEE 1394a LIGHTED CABLE ASSEMBLIES IEEE 1394a CABLE ASSEMBLIES

Features

- Data transfer speeds up to 400Mbps.
- Plug-and-Play connectivity.
- Outer shield and inner shield (foil and braid) ensures compliance with the latest IEEE 1394 standards, which reduces radio frequency and electro-magnetic interference.
- Apple FireWire and Sony i.Link compatible.



Applications

- Digital interface - no need to convert digital data into analog and then digital again for processing, which will have a loss of data integrity.
- Easy to use - no terminators, devices ID etc
- Hot plugged for plug and play applications.
- Cheap - the high volume consumer market will achieve low-cost implementation.
- Daisy chain connection.
- Fast - Consumer electronic devices (up to 100Mbps data rate), as Video / Game devices, Connect, Conventional PC peripheral, Digital audio tape (DAT) recorders. Connect electronic components (up to 200Mbps data rate), as High end keyboard synthesizer, Digital camcorders and VCRs. Professional and industrial market can up to 400Mbps data rate.



L1394a-LL66TR
IEEE 1394a Lighted 6P/M to 6P/M



L1394a-LL64TR
IEEE 1394a Lighted 6P/M to 4P/M



1394a-66LLBK
IEEE 1394a 6P/M to 6P/M



1394a-64LLBK
IEEE 1394a 6P/M to 4P/M



1394a-45LLBK
IEEE 1394a 4P/M to 4P/M

Note:

- LL = Cable Length
03 = 3 Feet , 06 = 6 Feet , 10 = 10 Feet,
- Cable Color
TR=Transparent , BK = Black , BG = Beige , GY = Gray .



IEEE 1394b CABLE ASSEMBLIES

Features

- Data transfer speeds up to 800 Mbps.
- Plug-and-Play connectivity.
- Outer shield and inner shield (foil and braid) ensures compliance with the latest IEEE 1394 standards, which reduces radio frequency and electro-magnetic interference.
- Apple Fire Wire and Sony i.Link compatible.

IEEE 1394b-2002 is available in two keyed configurations

- Beta: Higher speed advantage of connectivity to other Beta devices.
- Bilingual: Offers backward compatibility for legacy devices (1394 4 pin or 6 pin).

IEEE 1394b technology offers higher bandwidth and a wider range of applications including the following:

- | | | |
|----------------------------|-----------------------|-------------|
| • Desktop/Laptop Computers | • Set-Top Boxes | • Printers |
| • DV Camcorders | • Game Players | • Scanners |
| • External Hard Drives | • DVD/Audio Component | • HDTV/DVCR |
| • Protocol Analyzers | • Automotive | |



1394b-9191LLBK
IEEE 1394b Bilingual 9Pin to Bilingual 9Pin



1394b-9292LLBK
IEEE 1394b Beta 9Pin to Beta 9Pin



1394b-9106LLBK
IEEE 1394b Bilingual 9Pin to 1394a 6Pin



1394b-9104LLBK
IEEE 1394b Bilingual 9Pin to 1394a 4Pin

Note:

- LL = Cable Length
03 = 3 Feet , 06 = 6 Feet , 10 = 10 Feet,
- Cable Color
BK = Black , BG = Beige , GY = Gray .



SATA CABLE ASSEMBLIES



SATA II Cable 7F TO 7F
right angle-straight



SATA 22F TO SATA 7F
(straight)+power



SATA 22F TO SATA 7F
(right angle)+power



ESATA 7M TO SATA II 7F



SATA II 2*7M TO 2*7F



SATA II 7F TO 7F



SATA I Cable 7F TO 7F
straight-right angle



SATA I Cable 7F TO 7F
straight-straight



EXTENDING WIRE & CABLE CO., LTD.

Water-Proof Cable & Connectors



LAN CABLE & ACCESSORIES





PATCH CORD (CAT. 6, CAT. 5E)



Assembly Type



Molded Type 1



Molded Type 2



Molded Type 3



Boot Type



Slim Patch Cord



Jack TO Plug

WIRING DIAGRAM(T568A)

P1	WIRE COLOR	P1
1	WH/GR	1
2	GREEN	2
3	WH/OR	3
6	ORANGE	6
4	BLUE	4
5	WH/BL	5
7	WH/BR	7
8	BROWN	8
SHELL — DRAIN WIRE — SHELL		

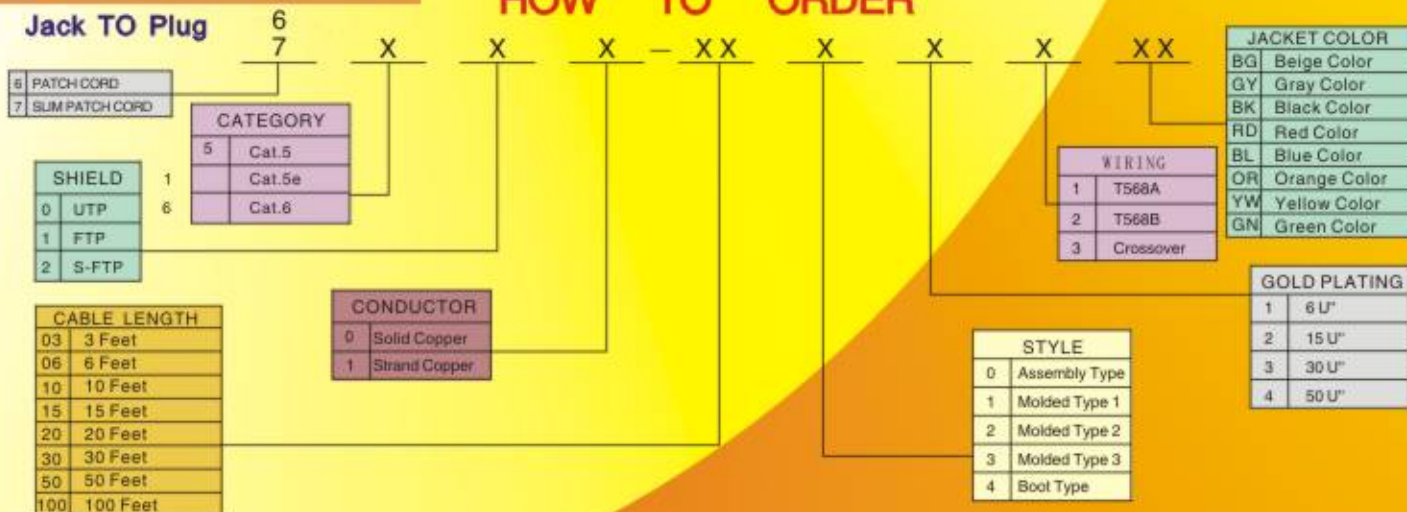
WIRING DIAGRAM(T568B)

P1	WIRE COLOR	P1
1	WH/OR	1
2	ORANGE	2
3	WH/GR	3
6	GREEN	6
4	WH/BL	4
5	WH/BR	5
7	BROWN	7
8	BROWN	8
SHELL — DRAIN WIRE — SHELL		

WIRING DIAGRAM(CROSSOVER)

P1	WIRE COLOR	P1
1	WH/OR	3
2	ORANGE	6
3	WH/GR	1
6	GREEN	2
4	BLUE	7
5	WH/BL	8
7	WH/BR	4
8	BROWN	5
SHELL — DRAIN WIRE — SHELL		

HOW TO ORDER



For Example :6101 - 06142BG

Patch Cord , Cat.5e UTP Stranded Type , 6 Feet Length , Molded #1 Type , With 50u" Plug , T568B Wiring , Beige Color .



LAN CABLE CAT. 6 , CAT.5E

Features

- Category 6 , 5e Twisted Pair Bulk Cable (UTP , FTP , S-FTP).
- Bulk Cable Comes in easy Pull Boxes with Footage Markers .(1000FT / Box)
- UL Listed/CSA Approved (E223405).
- ETL Verified To TIA / EIA-568A Specifications.
- Characterized up to 250 MHz (CAT.6) , 100MHz (CAT.5e).
- Different Colors are all available (see below "Note" for colors)



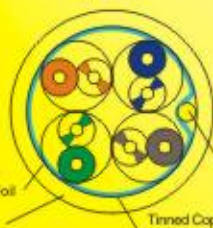
UTP



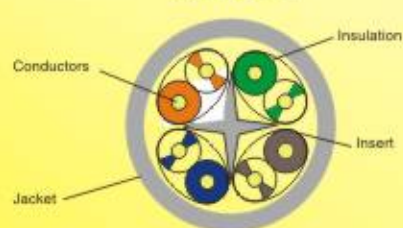
FTP



S-FTP



CAT.6 UTP



Part Number	Description
UTP / 5eS4P - XX	CAT.5e , 4 Pair , Solid , 1000 Ft / Box .
UTP / 5eT4P - XX	CAT.5e , 4 Pair , Stranded , 1000 Ft / Box .
FTP / 5eS4P - XX	CAT.5e , 4 Pair , Solid With AL-Mylar Foil , 1000 Ft / Box .
FTP / 5eT4P - XX	CAT.5e , 4 Pair , Stranded With AL-Mylar Foil , 1000 Ft / Box .
S-FTP / 5eS4P - XX	CAT.5e , 4 Pair , Solid With AL-Mylar Foil & Copper Braid , 1000 Ft / Box .
S-FTP / 5eT4P - XX	CAT.5e , 4 Pair , Stranded With AL-Mylar Foil & Copper Braid , 1000 Ft / Box .
UTP / 6S4P - XX	CAT.6 , 4 Pair , Solid , 1000 Ft / Box .
UTP / 6T4P - XX	CAT.6 , 4 Pair , Stranded , 1000 Ft / Box

Note : XX = Jacket Color

BL - Blue, OR - Orange, YL - Yellow, GN - Green, RD - Red, BK - Black, BE - Beige, GY - Grey.

KVM CABLE ASSEMBLIES



EXTENDING WIRE & CABLE CO., LTD.



KVM CABLE ASSEMBLIES



KVM-21116606BK
DB25M TO HDB15M+MD6M*2
L=6FT
Black Color



KVM-116606BK
HDB15M+MD6M*2 TO HDB15M+MD6M*2
L=6FT
Black Color



KVM-1166106606BK
HDB15M+MD6M*2 TO HDB15F+MD6M*2
L=6FT
Black Color



KVM-11A11B06BK
HDB15M+USB A/M TO HDB15M+USB B/M
L=6FT
Black Color



KVM-11A6611B6606BK
HDB15M+USB A/M+MD6M*2 TO
HDB15M+USB B/M+MD6M*2
L=6FT
Black Color



KVM-1166P06BG
HDB15M+MD6M*2+ø3.5 Stereo Plug TO
HDB15M+MD6M*2+ø3.5 Stereo Plug
L=6FT
Belge Color



COMPUTER CABLE & ADAPTOR

PS/2 KEYBOARD ADAPTOR

AD-501 MINIDIN 6 FEMALE / DIN 5 MALE
AD-502 MINIDIN 6 MALE / DIN 5 FEMALE



AT MODEM ADAPTOR

AD-503 DB9 MALE / DB25 MALE MOLDED
AD-504 DB9 MALE / DB25 FEMALE MOLDED
AD-505 DB9 FEMALE / DB25 MALE MOLDED
AD-506 DB9 FEMALE / DB25 FEMALE MOLDED



RS232 SERIAL ADAPTOR

AD-507 DB25 MALE / DB25 MALE MOLDED
AD-508 DB25 MALE / DB25 FEMALE MOLDED
AD-509 DB25 FEMALE / DB25 FEMALE MOLDED



RS232 SERIAL ADAPTOR

AD-510 DB9 MALE / DB9 MALE MOLDED
AD-511 DB9 MALE / DB9 FEMALE MOLDED
AD-512 DB9 FEMALE / DB9 FEMALE MOLDED
AD-513 HDDB15 MALE / HDDB15 MALE MOLDED
AD-514 HDDB15 MALE / HDDB15 FEMALE MOLDED
AD-515 HDDB15 FEMALE / HDDB15 FEMALE MOLDED



HIGH QUALITY VGA CABLE

CM-601-LL DB9 MALE / DB9 MALE MOLDED
CM-602-LL DB9 MALE / DB9 FEMALE MOLDED
CM-603-LL DB9 FEMALE / DB9 FEMALE MOLDED
CM-604-LL HDDB15 MALE / HDDB15 MALE MOLDED
CM-605-LL HDDB15 MALE / HDDB15 FEMALE MOLDED
CM-606-LL HDDB15 FEMALE / HDDB15 FEMALE MOLDED



LINE CABLE-9 WIRES

CM-607-LL DB25 MALE / DB25 MALE MOLDED
CM-608-LL DB25 MALE / DB25 FEMALE MOLDED
CM-609-LL DB25 FEMALE / DB25 FEMALE MOLDED



PRO SERIES IEEE 1284 PRINTER CABLE

CM-610-LL CENT36 MALE / HPCN36 FEMALE ASSEMBLY



IEEE 1284 PRINTER CABLE

CM-611-LL DB25 MALE / CENT36 MALE MOLDED
CM-612-LL DB25 FEMALE / CENT36 MALE MOLDED



Note:

- LL=Cable Length(6ft, 10ft.....)



COMPUTER CABLE ASSEMBLIES

SCSI II CABLE-DB25 TO HPDB50M

CM-613-LL DB25 MALE / HPDB50 MALE MOLDED
CM-614-LL DB25 FEMALE / HPDB50 MALE MOLDED



SCSI II CABLE-CEN.50 M TO HPDB50 M

CM-615-LL CEN.50 MALE / HPDB50 MALE MOLDED



SCSI II CABLE-HPDB50 M TO HPDB50 M

CM-616-LL HPDB50 MALE / HPDB50 MALE MOLDED



SCSI III CABLE-HPDB68 M TO HPDB68 M

CM-617-LL HPDB68 MALE / HPDB68 MALE MOLDED



SCSI III CABLE HPDB50 M TO HPDB68 M

CM-618-LL HPDB50 MALE / HPDB68 MALE MOLDED



SCSI III CABLE-CEN.50 M TO HPDB68 M

CM-619-LL CEN.36 MALE / HPDB68 MALE MOLDED



PRO SERIES IEEE 1284 PRINTER CABLE

CM-620-LL HPCN36 MALE / DB25 MALE MOLDED



PS/2 "Y" CABLE-MD6 M TO MD6 F*2

CM-621-LL MINI DIN6 MALE TO MINI DIN6 FEMALE*2 MOLDED



Note:

- LL=Cable Length(6ft, 10ft.....)



AUDIO / VIDEO CABLE & ADAPTOR



AV-AD01PBK
SCART Video Adaptor S-VHS



AV-212PLLBK
SCART Plug to SCART Plug



AV-2135SMD4PLLBK
SCART Plug to MD4P/M and ø3.5 Stereo Plug



AV-21R23PLLBK
SCART Plug to 3 RCA Plug



AV-2135SR1T1PLLBK
SCART Plug to ø3.5 Stereo Plug,
RCA Plug and TV Plug



AV-21R26PLLBK
SCART Plug to 6 RCA Plug



AV-2135SPLLTR
SCART Plug to ø3.5 Stereo Plug



AV-35SR13PLLTR
ø3.5 Stereo Plug to 3 RCA Plug



AV-35MR12PLLBK
ø3.5 Mono Plug *2 to 2 RCA Plug



AV-R14PLLBK
2 RCA Plug to 2 RCA Plug



AV-RF4PLLBK
2 RCA JACK to 2 RCA JACK



AV-R12RF2PLLBK
2 RCA Plug to 2 RCA Jack

Note:

- P=Planted
- G=Gold , N=Nickel

- LL= Cable Length
- 08= 6 Feet, 10=10Feet, 30=30Feet,50=50Feet.



AUDIO / VIDEO CABLE & ADAPTOR



AV-R26PLLBK
3 RCA Plug to 3 RCA Plug



AV-35SR12PLLBK
ø3.5 Stereo Plug to 2 RCA Plug



AV-2135SMD4PLLBK
ø3.5 Stereo Plug to ø3.5 Stereo Plug



AV-35S/FPLLBK
ø3.5 Stereo Plug to ø3.5 Stereo Jack



AV-35F4PLLBK
ø3.5 Stereo Jack x2 to ø3.5 Stereo Jack x2



AV-35S/F2PLLBK
ø3.5 Stereo Plug to ø3.5 Stereo Jack x2



AV-35F2PLLBK
ø3.5 Stereo Jack to ø3.5 Stereo Jack



AV-R12PLLBK
RCA Plug to RCA Plug



AV-R1/FPLLBK
RCA Plug to RCA Jack



AV-RF2PLLBK
RCA Jack to RCA Jack



AV-T2PLLBK
TV Plug to TV Plug



AV-MD42PLLBK
Mini 4P/M to Mini 4P/M

Note:
P=Planted
G=Gold, N=Nickel

LL=Cable Length
06=6Feet, 10=10 Feet, 30=30 FEET, 50=50 Feet.



OEM & ODM PRODUCTS





OEM & ODM PRODUCTS





TELEPHONE HANDSET COILED CORD

UL 20251

FILE NO. E141772

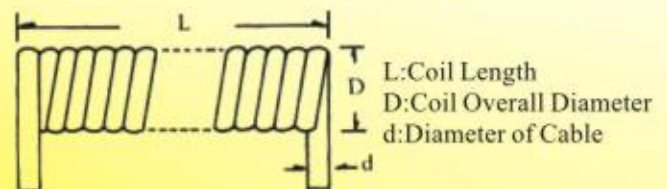
UNSHIELDED 60°C 150V

PRODUCT DESCRIPTION:

- Conductor: Tinsel wire (T250 x H4)
- Color-coded polypropylene insulation.
- Cores laid parallel to form a flat.
- PVC jacket.
- Coiled cord.
- Rating: 60°C, 150V.
- Passed VW-1 Vertical Flame Test.

APPLICATIONS:

- Internal cable of electronic equipment, or as "Handset cord or telephone cord for subscriber sets UL 1863".



HOW TO ORDER

201-S 2F

Telephone Handset Coiled Cord

Tinsel Wire

No. of Cores

F: Flat Cable
R: Round Cable

UL Style	Item No.	Conductor No./mm	No. of Cores	Insulation		Jacket	
				Thickness mm	Diameter mm	Thickness mm	Diameter mm
	201-S2F	Tinsel Wire T250 x H4	2	0.25	0.95	0.87	2.4 x 4.0
	201-S4F		4			0.62	2.4 x 4.9
	201-S6F		6			0.62	2.4 x 6.8
	201-S8F		8			0.62	2.4 x 8.8



TELEPHONE LINE CORD

UL 20251

FILE NO. E141772

SHIELDED PAIRS 60°C 150V

PRODUCT DESCRIPTION:

- Stranded tinned or bare copper conductor.
- Color-coded polypropylene insulation
- PVC jacket.
- Rating: 60°C, 150V.
- Passed VW-1 Vertical Flame Test.

APPLICATIONS:

- Internal cable of electronic equipment, or as "Handset cord or telephone cord for subscriber sets UL 1863".



HOW TO ORDER

202-26 B 4 F


Telephone Line Cord

Conductor Size(AWG)

B: Bare Copper
T: Tinned Copper

No. of Cores

F: Flat Cable
R: Round Cable

UL Style	Item Number	Conductor No./mm	No. of Cores	Insulation		Jacket	
				Thickness mm	Diameter mm	Thickness mm	Diameter mm
	202-28B2F	28AWG (7/0.12)	2	0.28	0.95	0.88	2.4 x 4.0
	202-28B4F		4	0.28	0.95	0.66	2.4 x 4.9
	202-28B6F		6	0.28	0.95	0.69	2.4 x 6.8
	202-28B8F		8	0.28	0.95	0.71	2.4 x 8.8
	202-28B10F		10	0.26	0.88	0.60	2.4 x 10.0
	202-26B2F	26AWG (7/0.16)	2	0.24	0.95	0.88	2.4 x 4.0
	202-26B4F		4	0.24	0.95	0.66	2.4 x 4.9
	202-26B6F		6	0.24	0.95	0.69	2.4 x 6.8
	202-26B8F		8	0.24	0.95	0.71	2.4 x 8.8
	202-26B10F		10	0.20	0.88	0.60	2.4 x 10.0
	202-24B2F	24AWG (7/0.20)	2	0.20	1.00	0.85	2.4 x 4.0
	202-24B4F		4	0.20	1.00	0.60	2.4 x 4.9
	202-24B6F		6	0.20	1.00	0.60	2.4 x 6.8
	202-24B8F		8	0.20	1.00	0.60	2.4 x 8.8



TELEPHONE ACCESSORY

U.S.A



ET-032

U.S.Plug To U.S. Plug
2C,4C,6C,8C.



ET-810

U.S.Plug To U.S. Jack
2C,4C,6C,8C.



ET-038

U.S.Plug To U.S. Jack
2C,4C,6C,8C.



ET-033

U.S.Plug To U.S. Plug
2C,4C,6C,8C.



ET-210

In Line Coupler
2C,4C,6C,8C.



ET-303

3 Way Coupler
2Cx3. 4Cx3. 6Cx3. 8Cx3.



ET-468SS

Modular Surface
Jack(Mini Type)
2C,4C,6C



ET-201

Single Adaptor
2C,4C,6C,8C.



ET-468S

Modular Surface Jack
(Economy Type)
2C, 4C, 6C.



ET-468S2

Modular Surface Dual Jack
(Economy Type)
2C, 4C



ET-468

Surface Jack
4C, 6C, 8C.



ET-1001

Twist Stopper Adaptor.



TELEPHONE ACCESSORY

GERMANY



ET-G2203

TAE Plug TO U.S. Plug
N/F Selective



ET-G2205

TAE Jack TO U.S. Plug
N/F Selective



ET-G2014

TAE Plug/Jack With U.S. Jack Adaptor
N/F Selective

FRANCE



ET-F2014

France Plug/Jack With U.S. Jack Adaptor



ET-F2009

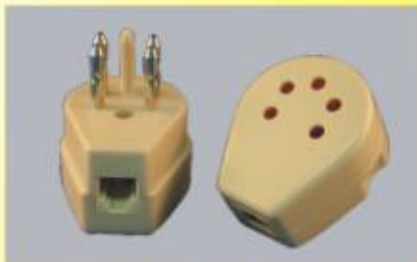
France Plug/Jack To U.S. Plug



ET-F03W

France Wall Jack

BELGIUM



ET-B2015

Belgium Plug/ Jack With U.S. Jack Adaptor



ET-B2207

Belgium Plug/Jack To U.S. Plug



ET-B2205

Belgium Jack To U.S. Plug



TELEPHONE ACCESSORY

HOLLAND



ET-H2014

Holland Plug/Jack With U.S. Jack Adaptor



ET-H2207

Holland Plug/Jack To U.S. Plug



ET-H2203

Holland Plug To U.S. Plug

ENGLAND



ET-E07

BT Plug To U.S. & BT Socket
6P2Cx2, 6P4Cx2, 6P6Cx2.



ET-E2202

BT Plug To U.S. Jack
2C, 4C, 6C.



ET-E32

BT Plug To U.S. Plug
2C, 4C, 6C.

ITALY



ET-I2014

Italy Plug / Jack With U.S. Jack Adaptor



ET-I2207

Italy Plug/Jack To U.S. Plug



ET-A2053

Austria Plug To U.S. Plug
With Indicator"▲"



TELEPHONE ACCESSORY

SWITZERLAND



ET-SW2215

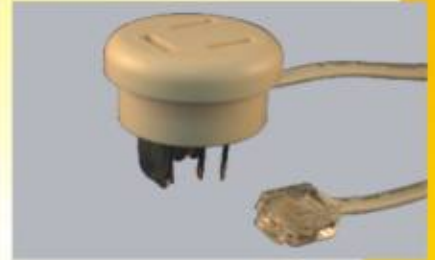
Switzerland Plug To U.S. Plug



ET-SW2014

Switzerland Plug/Jack To U.S. Jack

DENMARK



ET-D2207

Denmark Plug/Jack To U.S. Plug

SWEDEN



ET-SD04

Sweden Plug/Jack With U.S. Jack Adaptor



ET-SD07

Sweden Plug/Jack To U.S. Plug

FINLAND



ET-FN2014

Finland Plug/Jack With U.S. Plug Adaptor



ET-FN2207

Finland Plug/Jack To U.S. Plug



MODULAR PLUG



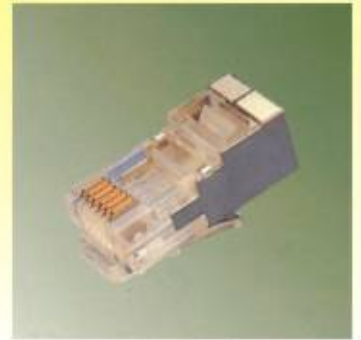
MP-140
4P2C,4P4C



MP-160
6P2C,6P4C,6P6C



MP-160D
6P4C,6P6C DEC TYPE



MP-160S
6P6C,SHIELDED TYPE



MP-160L
6P6C, LONG TYPE



MP-160E
6P2C,6P4C,6P6C



MP-160N
6P2C,6P4C,6P6C



MP-180
8P8C



MP-180S
8P8C SHIELDED TYPE



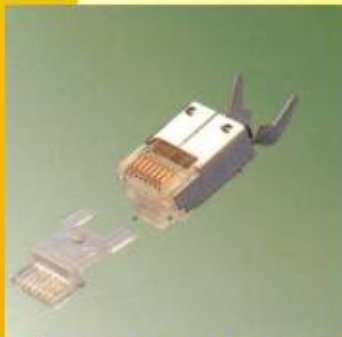
MP-180K
8P8C WITH KEY TYPE



MP-180I
8P8C WITH INSERT



MP-180C
8P8C SHORT TYPE



MP-180H
8P8C HIROSE TYPE



MP-180M
8P8C MOLEX TYPE



MP-100
10P10C



MP-100S
10P10C SHIELDED TYPE





EXTENDING WIRE & CABLE CO., LTD.

Head Office

世新電纜電纜有限公司

5F.,NO.657 Jungjeng Rd., Shinjuang District, Shin Bei City 24257, Taiwan

TEL:886-2-29086999 FAX:886-2-29086191

E-mail:sales@extending.com.tw

Http://www.extending.com.tw

總公司

臺灣省新北市新莊區中正路657號5F

電話:886-2-29086999 傳真:886-2-29086191

Factory

世新電業廠

Xi Tou Administrative Area, Xi Bao Road., Hou Jie Town,

Dong Guan City, Kwangtung Province, China

TEL:+86-769-85910805~8 FAX:+86-769-85910809

大陸廠

廣東省東莞市厚街鎮溪頭管理區溪寶路

電話:+86-769-85910805-8 傳真:+86-769-85910809

